

THE WONDERFUL WORLD OF DISSOCIA

A new production of Anthony Neilson's cult play, directed by Emma Baggott.

THE WONDERFUL WORLD OF DISSOCIA is approximately 130 minutes long including a 15 minute interval.

The show contains use of strobe lighting, haze and flashing lights. Contains strong language and scenes some may find upsetting relating to sexual violence and mental health.

CAST



ARCHIE BACKHOUSE

Goat / Passenger 3 / Oathtaker Attendant / Biffer / Nurse 2

Theatre includes: *Telethon* (UK Tour); *Hunger* (Arcola Theatre); *The Listening Room* (UK Tour); *There is a Field* (Theatre503); *The Outsider* (Print Room at the Coronet); *The Gap in the Light* (New Diorama Theatre); *Romeo and Juliet* and *Blade Runner* (Secret Cinema).

Television includes: *The Sandman*; *Save Me*.

Archie worked with theatre maker Christopher Green on their show *No Show* (The Yard) and recently worked with Complicité as an Associate Artist.



LEANDER DEENY

Victor Hesse / Bear / Argument / Dr Faraday

Theatre includes: *The Tempest* and *Henry V* (Shakespeare's Rose, York); *Robin Hood* (The Watermill Theatre); *The Rover* and *Two Noble Kinsmen* (Royal Shakespeare Company); *Timmy Failure* (Edinburgh Fringe); *The Dying of Today* (The Other Room, Cardiff); *The Secret Agent* (Young Vic / Traverse Theatre / UK Tour); *The Misanthrope* (Liverpool Playhouse / UK Tour); *Dead Kid Songs* (Ustinov Studio, Theatre Royal Bath); *Bugsy Malone* and *Brief Encounter* (Secret Cinema).

Television includes: *Skins*; *Merlin*; *Endeavour*; *Doctors*; *Holby City*.

Film includes: *Atonement*; *Captain America*.



MICHAEL GRADY-HALL

Vince / Insecurity Guard 1 / Inhibitions

Theatre includes: *House of Shades* (Almeida); *Venice Preserved*, *Imperium I&II*, *Oppenheimer*, *The Shoemaker's Holiday*, *As You Like It*, *Hamlet*, *All's Well That Ends Well*, *A Midsummer Night's Dream*, *The City Madam*, and *Cardenio* (Royal Shakespeare Company); *Othello* (ETT Dubai); *Julie* (Northern Stage); *Minotaur* (Polka Theatre / Theatre Clwyd); *Damned by Despair*, *Antigone*, *The White Guard*, and *Burnt by the Sun* (National Theatre); *Thyestes* (Arcola Theatre).

Television includes: *Jack Ryan*; *Casualty*; *Doctors*; *Doctor Thorne*; *Missing Something*.

Film includes: *Clash of the Titans*; *Through the Larkin Glass*; *How Was Your Week?*; *Ruth*; *Silent Night*; *Venus and the Sun*.



DOMINIQUE HAMILTON

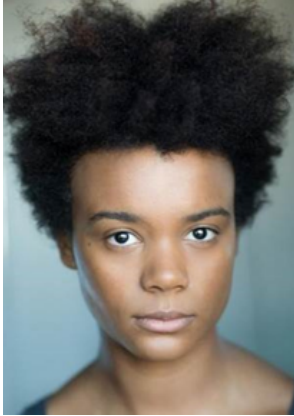
Jane / Passenger 1 / Oathtaker Attendant / Violinist / Dot

Film includes: *Moon Moss*.

As Wigs, Hair and Makeup Artist, theatre includes: *Oklahoma!* (Young Vic); *Wuthering Heights* (National Theatre / Bristol Old Vic); *Little Shop of Horrors* (Regent's Park Open Air Theatre).

As Wigs, Hair and Makeup Artist, film includes: *Matilda* (upcoming).

Other credits include: *Scare Actor* (Tulleys Scream Park); *Alice's Adventures Underground* (Waterloo Vaults).



LEAH HARVEY

Lisa

Theatre includes: *Small Island* (National Theatre); *Emilia* (Shakespeare's Globe); *Shakespeare Trilogy* (Donmar at King's Cross).

Television includes: *Foundation* (BAFTA nomination: Best Supporting Actress); *Fighting with My Family*.

Film includes: *Tuesday* (upcoming); *On the Road*.



DANIEL MILLAR

Oathtaker / Passenger 4 / Ticket / Dr Clark

Theatre includes: *House of Shades* (Almeida); *Measure For Measure* (Shakespeare's Globe); *King Lear*, *Edward II*, *Frankenstein*, *The White Guard*, and *A Midsummer Night's Dream* (National Theatre); *The Play That Goes Wrong* (Duchess Theatre); *The Winter's Tale* (Royal Shakespeare Company); *Against Captain's Orders*, *The Crash of the Elysium*, *The Black Diamond*, *The Night Chauffeur*, and *The Drowned Man* (Punchdrunk).

Television includes: *Casualty*; *London Kills*; *Britannia*; *Warren*; *Doctors*; *Trying Again*; *Beautiful Day*; *Psychoville*; *Doctors*; *EastEnders*; *Grownups*; *Two Pints of Lager and a Packet of Crisps*; *Holby City*.

Film includes: *Downton Abbey*; *The Current War*.



PHOEBE NAUGHTON

Britney / Passenger 2 / Oathtaker Attendant / Nurse 1

Theatre includes: *The Key Workers Cycle* (Almeida Theatre); *A Midsummer Night's Dream* (Alexandra Palace); *Scenes From The End of The World* (The Yard); *Thank You For The Music* (Southwark Playhouse).

Television includes: *The Third Day*.

Film includes: *Hoard*.



TOMI OGBARO

Insecurity Guard 2 / Nurse 3 / Laughter / Voice of Bear

Theatre includes: *Jane Eyre* (New Vic, Newcastle / Stephen Joseph Theatre); *The Book of Dust* (Bridge Theatre); *Seagulls* (Octagon Theatre); *An Act of Care* (York Theatre Royal); *A Midsummer Night's Dream* (Regent's Park Open Air Theatre); *Sweet Charity* (The Watermill Theatre).

Television includes: *Temple*; *Endeavour*.

Film includes: *See How They Run*; *Dao Hides*, *No Name*.

ABOUT ANTHONY NEILSON

Anthony Neilson is a ground-breaking playwright and director known for his collaborative way of writing and workshopping plays, characterised by their formal playfulness and often dark themes and humour.

As Writer-Director, theatre includes: *The Tell-Tale Heart* and *The Menu* (National Theatre); *The Séance* (National Theatre Connections); *The Prudes*, *Unreachable*, *Narrative*, *Get Santa!*, *Relocated*, *Penetrator* (also Edinburgh Festival), *The Lying Kind*, and *The Censor* (Royal Court); *The Wonderful World of Dissocia* (Royal Court / Tron Theatre / Edinburgh Lyceum / Theatre Royal Plymouth / UK Tour); *Alice's Adventures in Wonderland* and *Realism* (Edinburgh Lyceum); *The Haunting of Hill House* (Liverpool Playhouse); *God in Ruins* (Soho Theatre); *Edward Gant's Amazing Feats of Loneliness* (Theatre Royal Plymouth / UK Tour); *Stitching* (Traverse Theatre / Bush Theatre).

As Director, theatre includes: *Marat/Sade* (Royal Shakespeare Company); *The Drunks* (Courtyard Theatre); *The Big Lie* (Latitude Festival); *The Death of Klinghoffer* (Scottish Opera / Edinburgh International Festival).

CREATIVE TEAM

Writer Anthony Neilson
Director Emma Baggott
Set and Costume Designer Grace Smart
Lighting Designer Lucía Sánchez Roldán
Composer & Sound Designer Alexandra Faye Braithwaite
Movement & Intimacy Director Angela Gasparetto
Assistant Director Tramaine Reindorf
Casting Director Annelie Powell CDG
Casting Assistant Alice Walters
Costume Supervisor Jacquie Davies
Mental Health Consultant anna harpin

PRODUCTION TEAM

Production Manager Jennifer Taillefer
Stage Manager Rachel Rieley
Deputy Stage Manager Georgia Rose
Assistant Stage Manager Rob Brown
Head of Production (maternity cover) Simon Bourne
Production Coordinator Ferdy Emmet
Head of Stage and Workshop Dominic Kelly
Stage Deputy Daniel Steward
Head of Lighting Deanna Towli
Lighting Deputy Sam Marshall
Head of Sound Jeremy George
Sound No. 2 Amber Carey
Wardrobe Manager Sydonie Paterson
Dresser Manisha Sondhi
Scenic Artists Beata Nora Vida, Charlotte Bownass, Scott James
Senior Producer Catherine Morgenstern
Deputy Producer Sean Brooks

FOOD & DRINK

Our bar is open before and after the show. Whether you're looking for a coffee or a cocktail, we've got you covered. And while you're here, why not try out some of the home-cooked Caribbean fusion food from Island Vibe Kitchen. For more information, opening hours and to see the special events we have coming up in our Bar, please [click here](#).

COMING UP AT STRATFORD EAST

MUCH ADO ABOUT NOTHING, Tue 01 - Sat 05 Nov

'I do love nothing in the world so well as you. Is not that strange?'

Besotted young couple Claudio and Hero have fallen fast and are quickly engaged. Not everyone finds romance so straightforward. But somewhere in this world, there's someone for everyone, even if they're right under your nose. Shakespeare's raucous comedy is directed by Robert Hastie (Artistic Director, Sheffield Theatres).

HOW NOT TO DROWN, Thu 26 Jan - Sat 11 Feb

Award-winning theatre company, ThickSkin, return to the stage with an action packed, highly visual production telling the painful yet uplifting true story of an 11-year-old unaccompanied asylum-seeker.

"I don't know why my Dad let me go, especially when he knew how dangerous, how hard it was... I was too young, too weak to make this journey. I wouldn't have sent me... He wouldn't have sent me unless there was a reason."

[Click here for the full range of shows and events coming up at Stratford East.](#)