

STRATFORD EAST

Welcome to GONE TOO FAR! at Theatre Royal Stratford East

RELAXED PACK



Relaxed Environment Performance¹ – Wednesday 29th March 2023, 7:30pm

The running time² of GONE TOO FAR! is 1 hour and 40 minutes with a 20-minute interval³.

Act 1 will last approximately 55 minutes

Act 2 will last approximately 45 minutes

This visual story⁴ is for visitors attending the Relaxed Environment Performance of GONE TOO FAR!

This Relaxed Environment Performance has been adapted to suit those who would benefit from a more relaxed theatre environment. This pack also contains a Glossary with definitions at the end.

Getting here

Our address is:
Theatre Royal Stratford East
Gerry Raffles Square
London, E15 1BN

The theatre is a short walk via the Great Eastern Road from Stratford railway station and Stratford bus station.

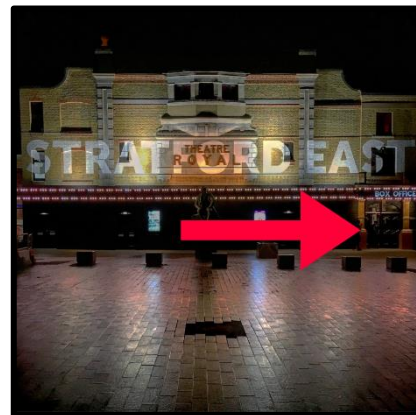
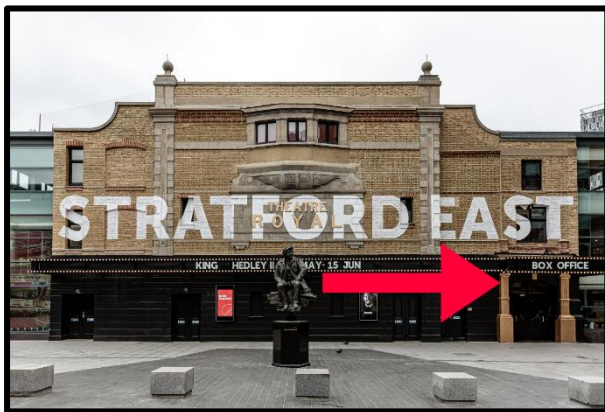
Stratford railway station is served by London Underground, DLR, TfL Rail and London Overground services.

The theatre does not have onsite parking. The nearby multistorey car park at the Stratford Centre is available, as well as limited parking spaces in the Stratford Picturehouse car park.

Entrance

Here is our building. The **red arrow** is pointing to the main entrance. These doors will be open from 10am.

These photos show you what the outside of the building looks like during the day and at night.



The entrance is step free and the doors have an assistance button to open the door if not already open, and there is a ramp.

These doors will lead you into the **Ground Floor Foyer**.

Inside the theatre



Ground Floor Foyer

This is the main Ground Floor Foyer⁵. You may be asked to wait here before entering the **auditorium**⁶.

This area can get rather busy before the show starts.

At this point, the entrance to the **Box Office** will be to your right.



Box Office

This is the **Box Office**⁷. This is where you can collect your **ticket(s)**⁸ from one of our Box Office assistants⁹ and find information about other shows and events, as well as book tickets. To meet accessibility needs, we have a lowered section of the counter. Our amazing Front of House team can also look after any large bags or items during your visit if needed.

If you have an **eTicket**⁹, you will not need to collect your ticket(s) from the Box Office as they would have been emailed to you or can be

downloaded from your online account¹⁰ on the Theatre Royal Stratford East website. However, visitors with an eTicket booking are still welcome to stop by the Box Office.

As you leave the Box Office, you'll return to the Foyer. Feel free to take a seat or visit our shop – which can be found on the second right in the Foyer.



Shop - The Avis Bunnage Foyer

This is our **shop**, situated in the Avis Bunnage Foyer, named after the actress. You can buy a selection of sweets and merchandise¹¹ to enjoy. There is also a limited seating area available.



Lift

A lift is available within the Avis Bunnage Foyer to take you to First and Second Floors. The Dress Circle is on the First Floor. The Upper Circle is on the Second Floor.

If you find there is no available seating in the Foyer/Shop areas, you will find seating spaces in our bar.

As you leave the Avis Bunnage Foyer and turn right, you will be able to see the door that leads to the Ground Floor toilet facilities.

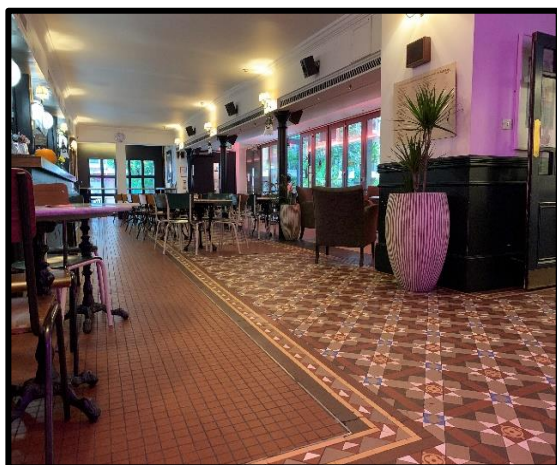


Accessible Toilets

Here is the door to the toilet facilities. We also have an unlocked gender neutral accessible toilet facility available. If the door to the accessible toilet is locked, please ask a member of staff for the key.

There are gender neutral accessible toilets located on every level, which you can reach via the lift.

There are also male and female toilets located throughout the building. The male toilets contain a mix of urinals and cubicles. The female toilets contain cubicles. There are also period disposal bins available in female toilets and accessible toilets.



Theatre Bar and Restaurant

Here is the theatre bar and restaurant¹², which is called Island Vibez Kitchen Stratford.

It has an open and friendly atmosphere with plenty of seating available and dimmed lighting.

This area can also get busy before a performance, and you may hear some loud noises.



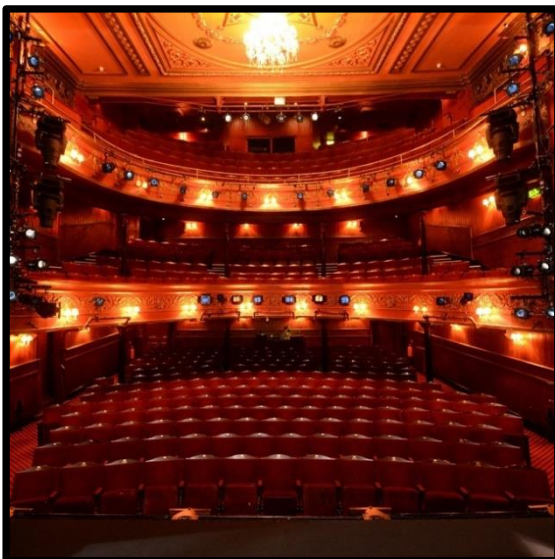
The bar sells a range of drinks, and food is also available to order.

Visitors can take their drinks into the auditorium. However, drinks must be in a plastic cup or bottle, as no glass is allowed inside the auditorium. Hot drinks cannot be taken into the auditorium.



Entrance and Exit from the Bar

The bar and restaurant can also be accessed from Gerry Raffles Square. A button-automated door and accessibility ramp is in place for those who may wish to enter/exit the building via the bar.



The Auditorium

The auditorium is where the audience¹³ sit when watching the performance. The stage¹⁴ is a space in the auditorium where the performance will take place.

The auditorium will open about 45 minutes before the show starts. You can find the time the show starts in your confirmation email and on your ticket.

You will need your ticket to enter the auditorium. Your ticket will tell you your seat number¹⁵.

One of our Front of House Assistants¹⁶ will check and scan your ticket. They can help guide you to your seat and assist you during your visit.

Seating

There are three different seating areas within the auditorium.

The Stalls¹⁷

The Dress Circle¹⁸ (also called the Jean Brown Dress Circle)

The Upper Circle¹⁹

There will be plenty of time for you to get comfortable before the show. If you find that you want to be seated in different part of the auditorium, one of our Front of House team will be on hand to help you.

During the performance, the doors will remain open – however they will be covered by a curtain.

Stalls

The Stalls seats can be accessed on the **GROUND FLOOR**. Actors²⁰ may come into this area during the performance. For GONE TOO FAR!, the cast will **not** come into the audience.

If you are a wheelchair user, one of our Front of House Assistants can help direct you to your seats. The accessible entrance to the Stalls is via the fire exit door situated in Gerry Raffles Square.

ROW G within the Stalls offers a wider seating space to meet accessibility needs. Space is also available at the rear of the Stalls. There are six wheelchair spaces within the Stalls.

Jean Brown Dress Circle

The Jean Brown Dress Circle is a raised seating area, and may not be suitable for audience members with mobility issues. The Jean Brown Dress Circle is on the **FIRST FLOOR** and can be accessed with the use of the stairs or the lift. There are **16** steps from the ground floor foyer to the Jean Brown Dress Circle. There are further **6** stairs to the First Floor foyer where the toilets are located – including an accessible toilet. There are steps inside the Jean Brown Dress Circle.

Upper Circle

The Upper Circle is our second, and highest, raised seating area. This can only be accessed on the **SECOND FLOOR** with the use of the stairs or the lift. Accessible toilets are situated in the **Foyer Area** on this floor. There 14 steps from the Dress Circle to the Upper Circle. There are 4 steps between the Foyer Area and the entrance to the Upper Circle.

Accessibility

We encourage people to feel comfortable with sharing their access requirements with the Box Office team when booking tickets. We have accessible toilets on all levels of the building.

If you find that your designated seat does not meet your accessibility requirements, please raise this with our Box Office team and Front of House team member.

Useful information on the day

Performance times

The show is made up of two halves with a 20-minute break in the middle (called the interval) and is a total of 1 hour and 40 minutes. The show starts at 7:30pm and will finish just after 9pm.

Show changes

For this Relaxed Environment Performance some aspects of the show have been altered in order to provide a calmer experience. This includes changes to some of the lights and sounds on stage. You are welcome to move freely in and out of the auditorium whenever you like.

The actors will sometimes come down into the aisles and interact with the audience. You can talk and interact with the actors or you can just watch.

There is a relaxed attitude to noise making.

Chill out zone

If you find the theatre experience overstimulating during your visit, everyone is welcome to visit our **CHILL OUT ZONE**.

Chill Out Zones offer a comfortable and spacious environment where you can relax. The chill out zone can found on **Level 1** in the **Ken Hill Bar**.

If you are seated in the Stalls and decide to leave the theatre early, you can exit via a back door at the rear of the Stalls. This will lead you to Gerry Raffles Square.

What is the show about?

GONE TOO FAR! is a play by Bola Agbaje. The play tells the story of two brothers.

When two brothers from different continents go down the street to buy a pint of milk, they lift the lid on a disunited nation; a world where everyone wants to be an individual, but no one wants to stand out from the crowd, and where respect is always demanded but rarely freely given.

The story is set in Peckham, London. Sometimes the characters will speak in Yoruba. Yoruba is a language which originates from West Africa.

The play contains strong language and drug use.

Key themes

The play addresses the following themes:

Racism

There are direct references to racism throughout.

Racism can be defined as: harmful or unfair things that people say, do, or think based on the belief that their own race makes them more intelligent, good, moral, etc. than people of other races.

Colourism

There are direct references to colourism throughout.

Colourism can be defined as: dislike and unfair treatment of the members of a particular racial group who have a darker skin colour than others in the same group.

Identity and heritage

There are references to identity and heritage throughout.

Heritage can be defined as: a person's racial, ethnic, religious, or cultural background.

Gentrification

There are references to Peckham becoming gentrified.

Gentrification can be defined as: the process by which a place, especially part of a city, changes from being a poor area to a richer one, where people from a higher social class live.

Knife Crime

A couple scenes include Knife Crime. At the end of the play, a character's arm gets cut by a knife.

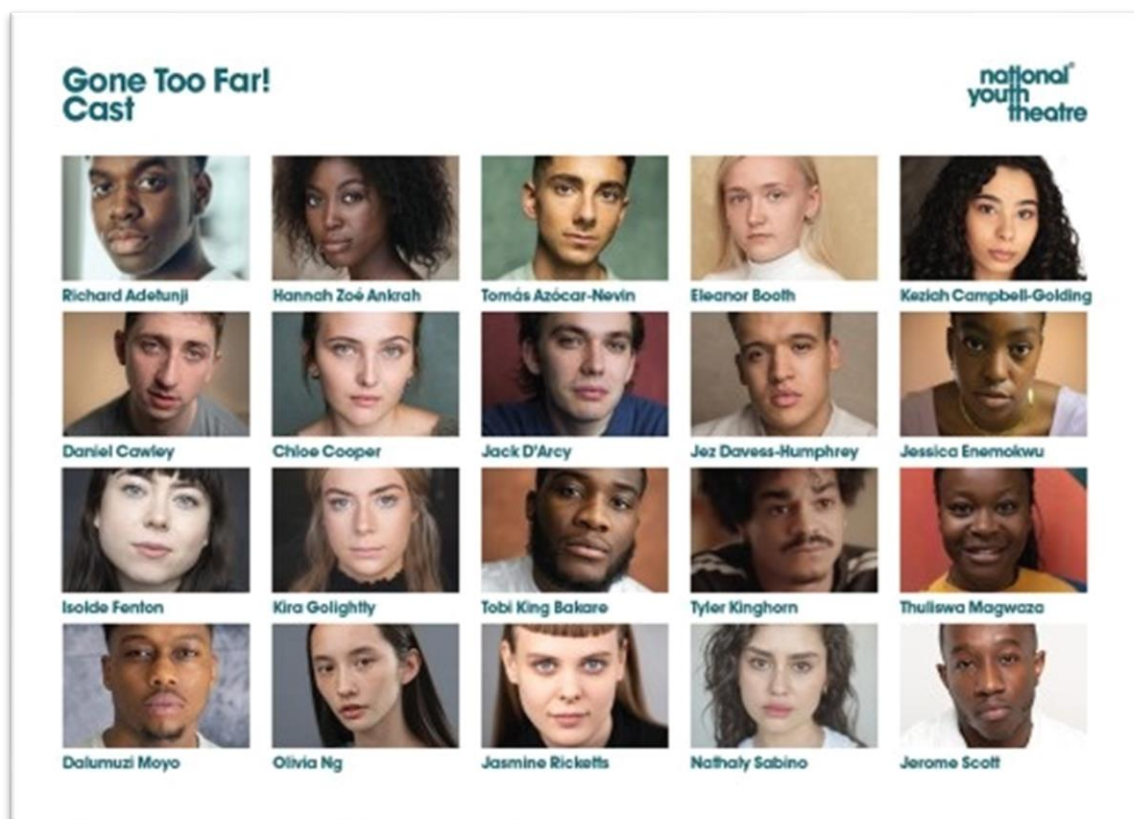
Crimes are illegal activities. Knife Crime includes any offence where a sharp instrument is used or possessed that would pierce the skin.

Meet the Actors

The people who will be performing on stage are known as Actors. The Actors will pretend to be different characters to tell the story. Before the show starts, some of the Actors will introduce themselves.

These are the Actors who will be performing in GONE TOO FAR! They are the people who will be on the stage. There are 20 Actors. They are part of a company called The National Youth Theatre's REP Company.

The National Youth Theatre of Great Britain provides opportunities for young people across Great Britain and Northern Ireland to get involved with theatre both on stage and behind the scenes.



The characters in GONE TOO FAR!

These are all of the characters in GONE TOO FAR!

Yemi - sixteen, stubborn, short-tempered, does not understand or speak Yoruba

Ikudayisi - eighteen, has an African accent which he changes to a fake American one when he is around other people, apart from Yemi; he speaks Yoruba

Mum (of Yemi and Ikudayisi) - has an African accent and speaks Yoruba

Shop Assistant - Ukrainian shop keeper

Dave - Creative, head of Neighbourhood watch

Armani - fifteen, speaks fast, with an attitude

Paris - sixteen, very calm, with a soft-spoken voice

Liz - Gentrified Peckham lady

Razer - seventeen, dresses well

Flamer - seventeen, wears the latest fashion, everything brand new

Blazer - eighteen; his presence shows he is not someone to mess with

Police Officers 1, 2, 3, 4

Scenes to note

Scene 2

Yemi and Ikudayisi go to a corner shop to buy milk. Yemi is wearing a balaclava. The Shop Assistant asks Yemi to take the balaclava off. As Yemi refuses to take the balaclava off, he is refused entry by the Shop Assistant. Dave comes to the shop to buy a couple of groceries. Dave witnesses the disruption taking place outside of the shop. Dave suggests the Shop Assistant should call the police. Yemi, frustrated, tries to enter the corner shop anyway. Dave uses himself as a human shield and the shopkeeper pushes Yemi back.

Scene 3

Yemi pokes Armani in the face after a small argument. Paris tries to stop Yemi but is pushed to the ground. Armani screams and shouts at Yemi. Armani is not happy and is held back by Ikudayisi. Yemi and Armani continue to argue. Ikudayisi stays in the middle of Yemi and Armani to keep them apart. Armani threatens Yemi. Yemi makes an advance on Paris, but Ikudayisi pulls Yemi back. Armani continues to shout at and threaten Yemi as he is nudged away by Ikudayisi.

Scene 7

Yemi and Ikudayisi begin to play fight. Yemi puts Ikudayisi into a headlock. Ikudayisi complains that he is struggling to breathe. Four police officers appear. Yemi releases Ikudayisi. A police officer pushes Yemi away from Ikudayisi. Yemi is then patted down by a police officer. Ikudayisi is nudged away by another police officer. Yemi tries to reason with the police officer talking to Ikudayisi. The police officer is displeased by this and confronts Yemi. There is some shouting. Yemi tries to get to Ikudayisi. Yemi is pushed back by one police officer and held back by another. Yemi is then shoved around by the police officers. After, the police officers surround Yemi. Ikudayisi tries to make his way to Yemi. Yemi and Ikudayisi are pushed apart by the police officers. The scene ends with Yemi getting nudged away by the police officers.

Scene 9

Ikudayisi accidentally bumps into Flamer while trying to look for Yemi. Ikudayisi gets a mark on one of Flamer's trainers. Flamer is not happy. Ikudayisi tries to walk away but Flamer grabs hold of Ikudayisi. Flamer wants £50 from Ikudayisi as Ikudayisi got one of his trainers dirty. Ikudayisi says he does not have £50. Flamer is not impressed by this and pulls out a knife. Ikudayisi puts his hands in the air and shouts 'armed robber'. Flamer demands Ikudayisi empties his pockets. Ikudayisi pockets are empty. Flamer then demands Ikudayisi passes over his trainers. Flamer points a knife at Ikudayisi. Flamer shouts at Ikudayisi again, demanding Ikudayisi passes over his trainers. Ikudayisi takes his trainers off while putting his hands on his head. As Flamer leaves with the trainers, Ikudayisi shouts at him.

Scene 10

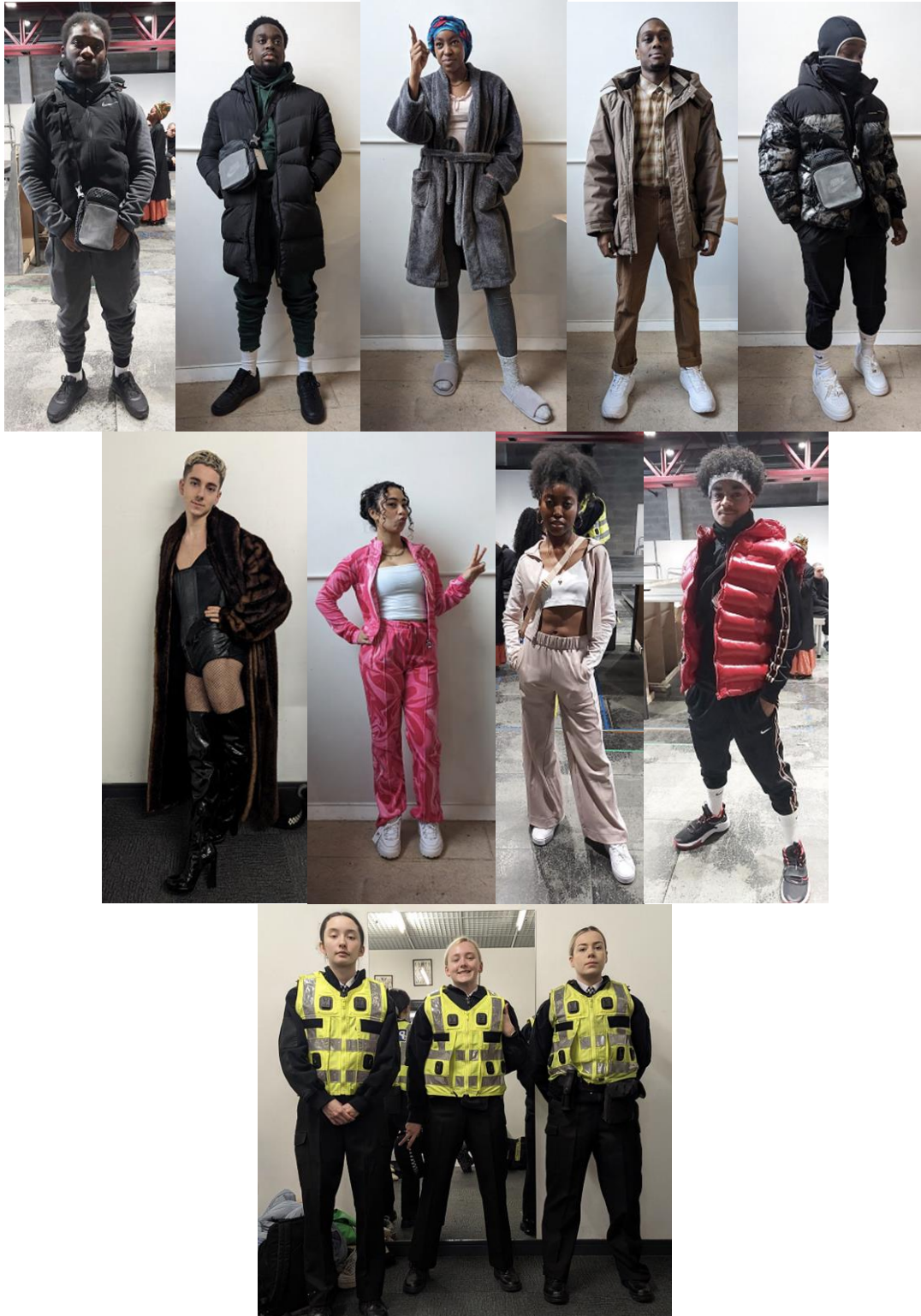
Yemi confronts Razer, thinking he robbed Ikudayisi. Razer tries to walk off but Yemi catches hold of him. Ikudayisi makes a comment about Armani and Razer is not impressed. Yemi is rude to Razer and Armani. Ikudayisi tries to move Yemi back. Yemi is not impressed. Yemi pushes Ikudayisi and moves towards Razer. There is some shouting and then Razer pulls out a knife. After some more talking/shouting, Yemi tries to get the knife. Yemi and Razer get into a scrap and Yemi gains control of the knife. Yemi becomes angry. Yemi waves the knife at Armani. Ikudayisi, Razer and Armani become a little intimidated. Ikudayisi tries to get the knife and struggles with Yemi. In the process the knife falls. Razer picks it up again. Razer starts to walk away and Yemi grabs him. Ikudayisi tries to stop Yemi. As Ikudayisi gets in between Razer and Yemi, Ikudayisi's arm gets slashed/cut by the knife.

Costumes

The costumes are mainly monochrome colours (black, white, grey).

Any brightly coloured costumes or objects represent importance to Yemi and his personal experiences.

These are some examples of the costumes in GONE TOO FAR!

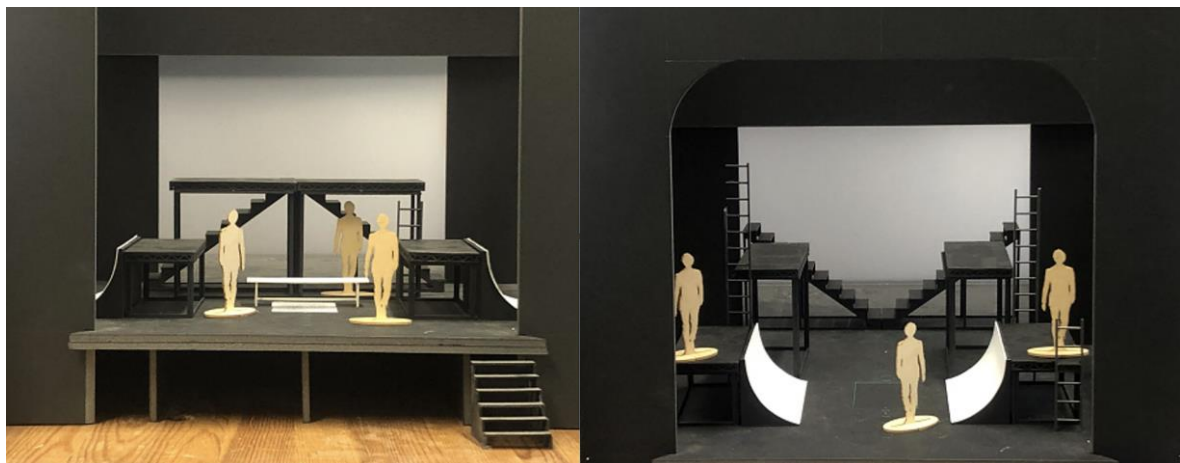


Set

The set is industrial-like. It is designed to be climbed and played on by the Actors. The set is designed to echo the urban sprawl of London, the question of ownership and the creeping gentrification of it.

The set will expand and shrink around the characters.

Here are some examples of what the set will look like:



Lighting and Special Effects

Lighting and Special Effects used within GONE TOO FAR! include:

- Static states for scenes with flashing
- Haze throughout
- Brief moments of darkness
- Flashing lights on occasion
- Vaping

Sound

Sound used within GONE TOO FAR! include:

- Contemporary music throughout
- Sirens
- No sudden loud noises

Glossary

1. **Relaxed Environment Performance:** Relaxed Environment Performances are open to all audience members and can be useful for those with an Autistic Spectrum Condition, sensory and communication disorder, learning disability and anyone who would benefit from a more relaxed theatre environment. These performances allow movement in and out of the auditorium and there is less emphasis on the audience being quiet during the performance. Often the show has been slightly adapted in terms of reducing or removing loud sounds and flashing lights. There will also be a separate chill-out room for any audience members that require it.
2. **Running Time:** This is the length of time a performance will last.
3. **Interval:** This is a short break in the middle of a performance where the audience can enjoy a drink, visit the toilets or exit the auditorium for a short while.
4. **Visual Story:** A story that uses images to tell the story of the play and highlight key moments within it.
5. **Foyer:** A waiting area at the entrance of a building.
6. **Auditorium:** A large area where the performance takes place and the audience watch
7. **Box Office:** An area where tickets can be purchased and collected from, as well as ask for more information about the theatre, current productions and upcoming shows.
8. **Ticket/Tickets:** A small piece of card, which has specific details written on it such as names and seating arrangements, and allows the named person to enter the auditorium.
9. **eTicket:** Like a card copy of a ticket, only a contactless version on your phone, tablet or computer. It contains the same information, and would have been sent to you via text or can be access through your Theatre Royal Stratford East online account. You will need to access this in order to gain access to the auditorium.
10. **Online account portal:** This is the section of the website where you can view your details, bookings and eTickets.
11. **Merchandise:** Goods that are sold in the shop.
12. **Theatre Bar & Restaurant:** A service in our theatre that provides a range of drinks and food to be consumed during your visit.

13. **Audience:** A term given the group of people who have come to watch a performance.
14. **Stage:** This is the area of the auditorium where the performance takes place. Many actors and performers may be on stage at one time.
15. **Seat Number:** Each seat in the theatre has a specific number. You can find the number on the top of each seat.
16. **Front of House Assistant:** Members of staff who are placed throughout the theatre to assist our customers during their visit. They're here to check everyone's tickets, provide access assistance, provide information and guide people through the building.
17. **Stalls:** The name given to the seats on the Ground Floor that are directly in front of the stage. This seating area also provides wheelchair accessibility.
18. **Dress Circle:** The name given to the raised seating area on the First Floor. This is also known as the Jean Brown Dress Circle.
19. **Upper Circle:** The name given to the second raised seating area on the Second Floor.
20. **Actors:** A term given to a person who performs different characters. You will see them appearing on stage.